

Statement US22/00000135

Greenhouse Gas Verification Statement

The inventory of Greenhouse Gas emissions in 01/01/2020 – 31/12/2020 of

TECO-WESTINGHOUSE MOTOR COMPANY (TWMC)

5100 N. IH 35, Round Rock, Texas, 78681, USA.

has been verified in accordance with ISO 14064-3:2018 as meeting the requirements of

ISO 14064-1: 2018

For the following activities

“Manufacture, service, and sales of electric motors, generators, and drives, including stock products and accessories”

Disclosing emissions of **6255.72** metric tonnes of CO₂ equivalent (Categories 1 and 2)

Lead Auditor: Ursula Antunez de Mayolo Corzo.
Technical Reviewer: Fabian Gonçalves

Statement date: September 23, 2022



Authorized by
Thiago Doretto
Director

SGS ICS Certificadora Ltda
Avenida Andrômeda, 832 – 5º. And 06473-000 – Barueri - SP - Brasil
Telephone: 11-3883 8880 / Fax: 11-3883 8899, www.br.sgs.com



This document is an authentic electronic certificate for Client' business purposes use only. Printed version of the electronic certificate are permitted and will be considered as a copy. This document is issued by the Company subject to SGS General Conditions of certification services available on Terms and Conditions | SGS. Attention is drawn to the limitation of liability, indemnification and jurisdictional clauses contained therein. This document is copyright protected and any unauthorized alteration, forgery or falsification of the content or appearance of this document is unlawful.



Statement US22/00000135, continued

TECO-WESTINGHOUSE MOTOR COMPANY (TWMC)

Brief Description of Verification Process

SGS has been contracted by TWMC for the verification of direct and indirect carbon dioxide equivalent (CO₂e) emissions as provided by TWMC, in their GHG Assertion in the form of a Greenhouse Gas Emissions Statement covering CO₂e emissions

Roles and responsibilities

TWMC is responsible for the organization's GHG information system, the development and maintenance of records and reporting procedures in accordance with that system, including the calculation and determination of GHG emissions information and the reported GHG emissions. It is SGS' responsibility to express an independent GHG verification opinion on the emissions as provided in TWMC' GHG Assertion for the period January 1, 2020 - December 31, 2020. SGS conducted a third-party verification following the requirements of ISO 14064-3:2006 of the provided GHG assertion. The verification was based on the verification scope, objectives and criteria as agreed between TWMC and SGS in February 2022.

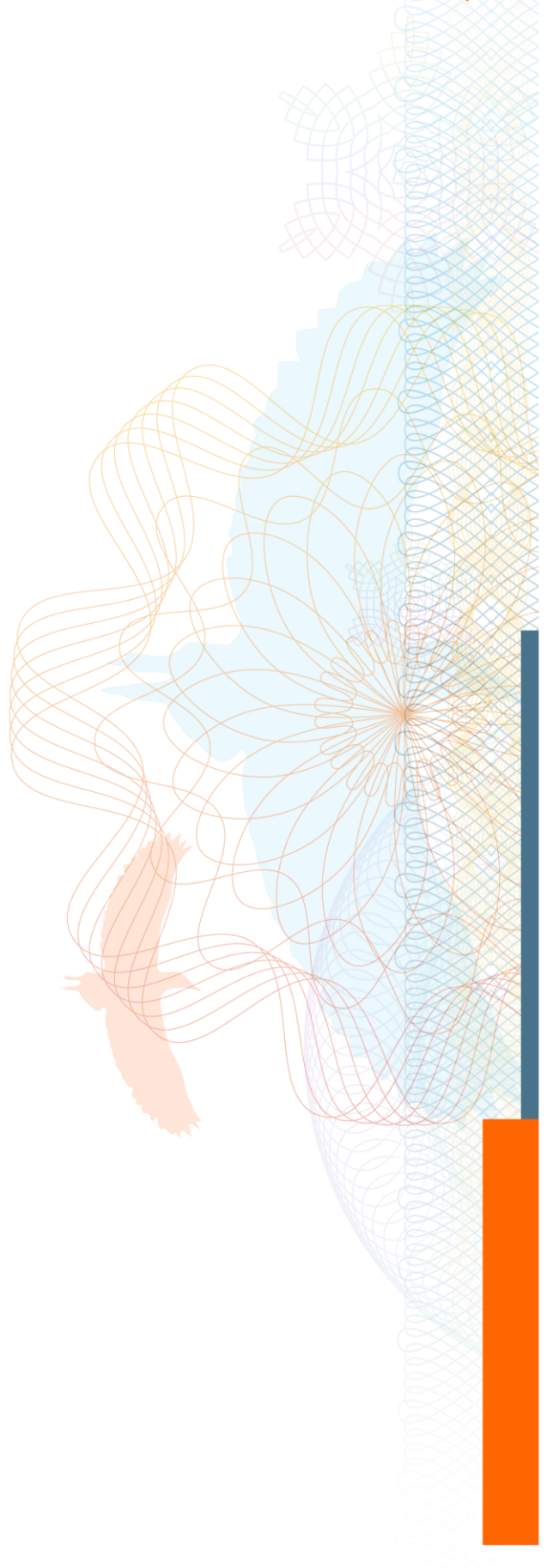
The assessment included an on-site audit for their facility in Round Rock, Texas.

Scope

TWMC has commissioned an independent verification by SGS of reported CO₂e emissions arising from their operations, to establish conformance with the requirements of ISO 14064-1 within the scope of the verification as outlined below. Data and information supporting the CO₂e assertion were historical in nature, projected, and proven by evidence. This engagement covers verification of emissions from anthropogenic sources of GHG included within the organization's boundary and meets the requirements of ISO 14064-1.

- Organizational boundary: Operational Control approach.
- Description of activities: "Manufacture, service, and sales of electric motors, generators, and drives, including stock products and accessories"
- Location of the activities: Facility in Round Rock, Texas. Other warehouses located in US are not included.
- Physical infrastructure, activities, technologies & processes: Manufacturing, administration, and warehousing. The TWMC-Round Rock facility is owned by TECO Electric and Machinery Co., Ltd.
- GHG sources included:
 - Category 1 – Direct GHG emissions: Stationary/mobile combustion, fugitive, and process emissions.
 - Category 2 – Indirect GHG emissions: Purchased electricity.
- Exclusions and Justifications:
 - Category 1 emissions from CO₂ shielding gas, dry ice, acetylene, and fire extinguishers have been excluded due to low materiality.
 - Categories 3 to 6 activities will be excluded since they do not primarily occur at TWMC-Round Rock.
- GHGs included: CO₂, N₂O, CH₄ and HFCs. There are no PFCs, SF₆ or NF₃. Biomass combustion was reported separately.
- GHG information for the following period was verified: January 1, 2020 - December 31, 2020.
- Intended user of the verification statement: Internal and General Public.
- Global Warming Potentials (GWPs): IPCC AR4, 2007.
- Directed actions: None reported for this year.





Statement US22/00000135, continued

TECO-WESTINGHOUSE MOTOR COMPANY (TWMC)

Objective

The purposes of this verification exercise are, by review of objective evidence, to independently review:

- Whether the CO₂e emissions are as declared by the organization's GHG assertion
- That the data reported is accurate, complete, consistent, transparent and free of material error or omission

Criteria

Criteria against which the verification assessment is undertaken are the requirements of ISO 14064-1.

Level of Assurance

The level of assurance agreed is *reasonable*

Materiality

The materiality required of the verification was considered by SGS to be below 5% for reasonable level of assurance, based on the needs of the intended user of the GHG Assertion

Conclusion

TWMC provided their GHG assertion based on the requirements of ISO 14064-1. The GHG emissions for the period January 1, 2020 - December 31, 2020 disclosed **6255.72 metric tonnes of CO₂e (Categories 1 and 2)**, were verified by SGS to a reasonable level of assurance, consistent with the agreed verification scope, objectives, and criteria.

SGS' approach is risk-based, drawing on an understanding of the risks associated with modeling GHG emission information and the controls in place to mitigate these risks. Our examination included assessment, on a sample basis, of evidence relevant to the emissions reporting.

SGS concludes with a reasonable level of assurance that the presented CO₂e assertion is materially correct, is a fair representation of the CO₂e data and information and is prepared following the ISO 14064-1 requirements. We planned and performed our work to obtain the information, explanations and evidence that we considered necessary to provide a reasonable level of assurance that the CO₂e emissions are fairly stated.

Observation

Consider quantifying and reporting the significant emissions from categories 3 to 6 for following years.

This statement shall be interpreted with the CO₂e assertion of TWMC as a whole.

Note: This Statement is issued, on behalf of Client, by **SGS do Brasil Ltda** - Av. Piracema, 1341 – Galpão Horizon 2º andar - Barueri/SP - CEP 06460-030. Brasil ("SGS") under its General Conditions for GHG Validation and Verification Services. The findings recorded hereon are based upon an audit performed by SGS. A full copy of this statement and the supporting GHG Assertion may be requested to TECO-WESTINGHOUSE MOTOR COMPANY This Statement does not relieve Client from compliance with any bylaws, federal, national or regional acts and regulations or with any guidelines issued pursuant to such regulations. Stipulations to the contrary are not binding on SGS and SGS shall have no responsibility vis-à-vis parties other than its Client.



This document is an authentic electronic certificate for Client' business purposes use only. Printed version of the electronic certificate are permitted and will be considered as a copy. This document is issued by the Company subject to SGS General Conditions of certification services available on Terms and Conditions | SGS. Attention is drawn to the limitation of liability, indemnification and jurisdictional clauses contained therein. This document is copyright protected and any unauthorized alteration, forgery or falsification of the content or appearance of this document is unlawful.

